

Engineering the Modern Campus

Transforming educational environments into elite sports technology hubs.



A Tech Native Generation Requires a Digitally Native Approach

The Disconnect

Relying strictly on traditional sports fails to engage a digital first generation and leaves unnecessary barriers to participation.

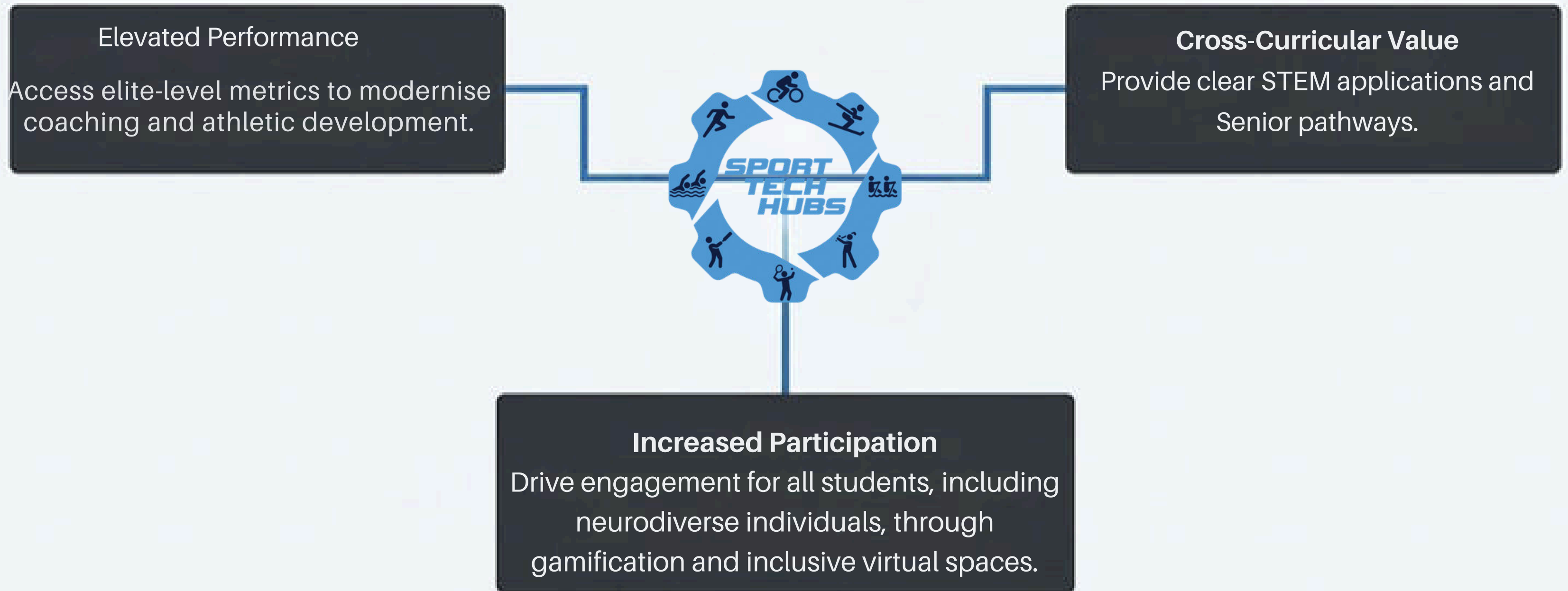
The Missing Insight

Outdated data collection leaves valuable performance and biometric insights on the table, resulting in subjective coaching.

The Result Disengaged students and missed cross-curricular opportunities in STEM and Senior pathways.

The Architects of High Performance Education

Sport Tech Hubs acts as your dedicated high-end sports technology consultant, transforming traditional sports programmes into cutting edge, data driven environments.



Beyond the Field The Educational Synthesis



Physical Play: The foundation of movement, effort, and gamified engagement.

Data Literacy: Students collect and interact with primary data (heatmaps, velocity, heart rate) generated by their own movement.

STEM & PE Applications: Translating raw data into curriculum-aligned biomechanics, physics, and energy systems theory.

Real World Pathways: Hands on exposure to industry standard software, creating direct pathways to careers in sports coaching, recruiting, broadcasting, data analytics, and technology.

The Elite Performance Ecosystem

Tactical Video & AI Analytics

Hudl Automated capture & deep video analysis for soccer, basketball, volleyball and rugby.

Swing Vision AI-powered racquet sports tracking.

Biometrics & Wearables

SPT Precision GPS and heart rate monitoring.

EO Swim Elite swim and aquatic analytics.

Immersive Simulation

Trackman Tour-proven launch monitors & golf simulators.

SkiMachine 365 access to the slopes, allowing your ski sports to flourish.

ErgZone, EXR, Rowcave Olympic backed dynamic rowing & complete environmental simulation.

Performance Diagnostics

Wahoo Cycling hardware for training that mirrors true riding conditions.

SBN bridging the digital gap in strength and conditioning, objective data at your fingertips.

Designing Inclusive Environments

The Educational Impact Matrix



Dimension	Traditional	Digital
Data Collection	Clipboard & Stopwatch	Automated AI, GPS, Radar
Engagement	Caters to confident athletes	Engages tech-natives, gamers, and provides safe, structured spaces for neurodiverse students
Outcomes	Physical health only	Cross-curricular STEM, Data Literacy, Digital Resilience
Environment	Weather-dependent, high logistical friction	Climate-controlled, immersive, multi-purpose hubs

Hudl Video & Tactical Analysis

Rugby Soccer Volleyball Basketball

The Elite Pedigree

Who Uses It Professional powerhouses like Fulham FC and GB Rugby Seven.

The Tech High performance video and data on one connected platform. Features Sportcode for custom performance analysis.

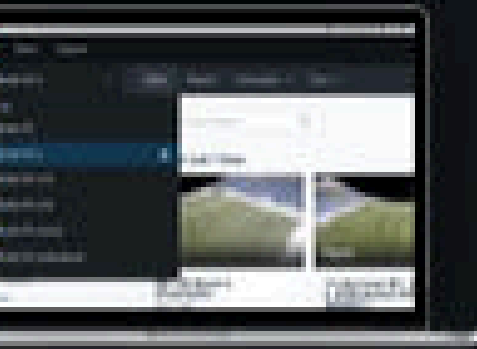
The Pro Edge An integrated, efficient, holistic approach to athlete data analysis.

The Classroom Application

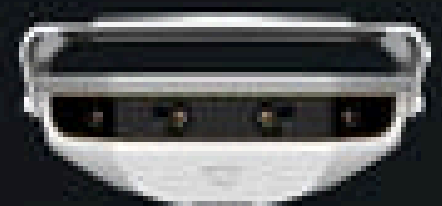
Automated Capture: Focus indoor/outdoor smart cameras automatically record, livestream, and upload matches, no student camera operators required.

Tactical Education: Students use industry standard software to review tactical decisions, enhancing game sense and spatial awareness.

School Pride: Seamlessly broadcast House matches and interschool tournaments to the community.



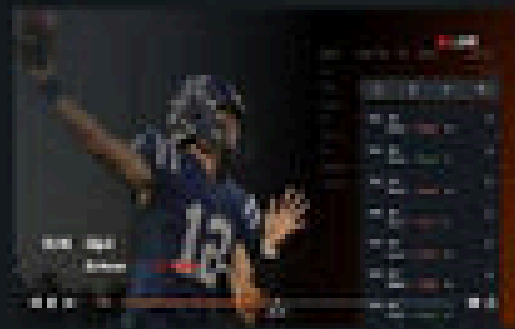
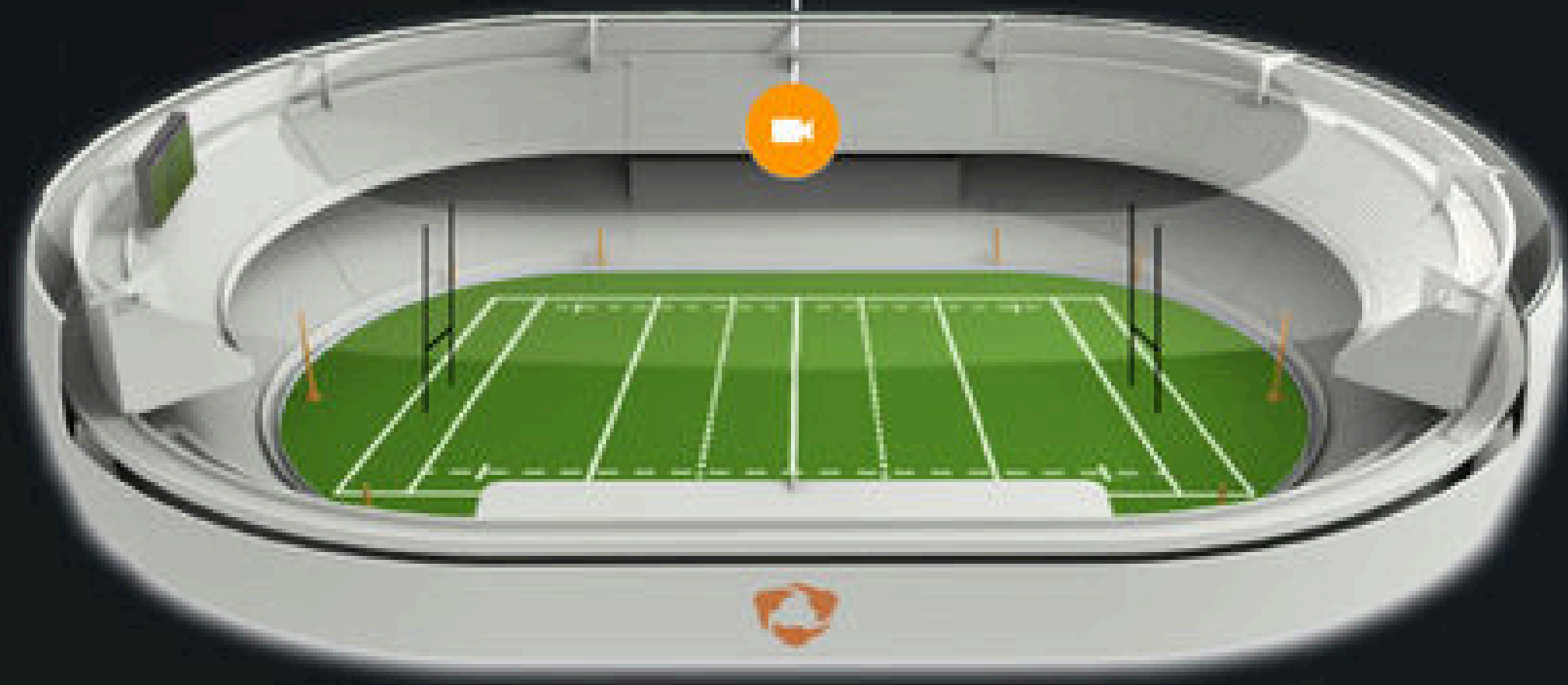
Auto Uploads



Live Streaming



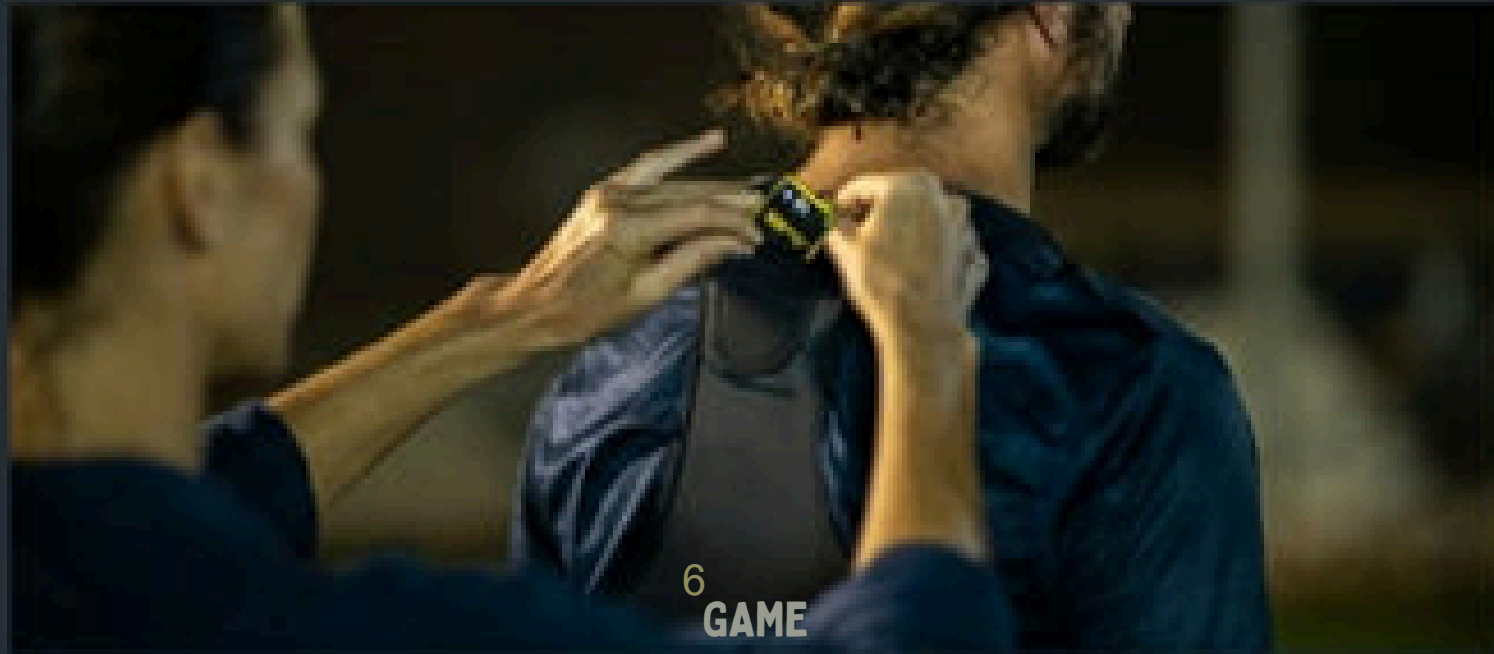
Single-angle Capture



Sport Performance Tracking

Precision GPS & Biometrics

The Elite Pedigree



Who Uses It Over 6,000 teams globally across high-contact professional environments.

The Tech The SPT NXT, the smallest team sports GPS unit on the market. Integrated conductive Heart Rate Vests.

The Pro Edge Tracks speed, impacts, athlete load, running zones, and heatmaps to manage workloads and prevent injury.

The Classroom Application

Primary Data Collection: Students track their own real time movement data during practical PE sessions.

Senior PE Alignment: Perfectly aligns with senior curriculum by allowing students to apply personal data to theories on energy systems and physiological performance.

Digital Literacy: Students navigate the GameTraka software, building critical thinking skills through data analysis.



RowCave, ErgZone, EXR

Immersive Aquatic Simulation

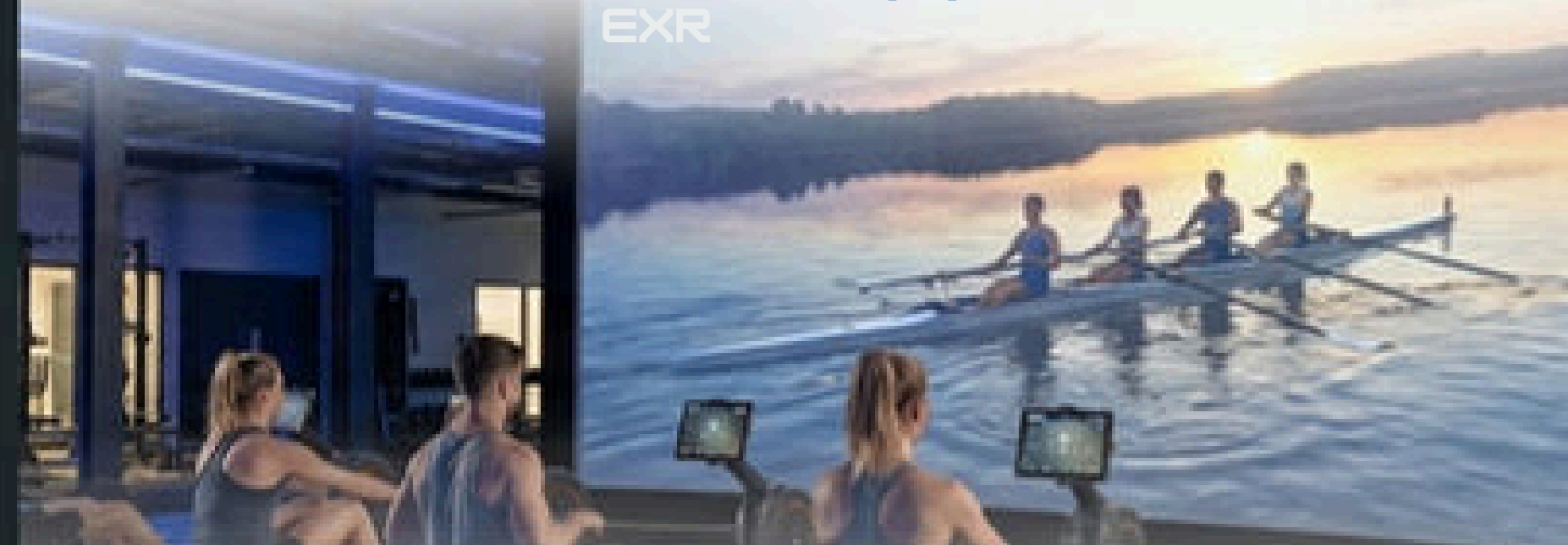
The Elite Pedigree

Who Uses It The official training setup for the German and Netherlands Olympic rowing teams.

The Tech RowCave is a three walled immersive projection system surrounding ergs that mimic the precise motion of on-water rowing. ErgZone is an app for training, EXR is an app for gamification.

The Pro Edge Complete crew synchronisation and perfect training conditions, regardless of freezing days or high winds.

The Classroom Application



Weather Proof Campus: Never lose critical water time or training time to poor weather conditions.

Digital Training: Remotely set programs, build athlete profiles, save and export metrics - connect to STEM integration.

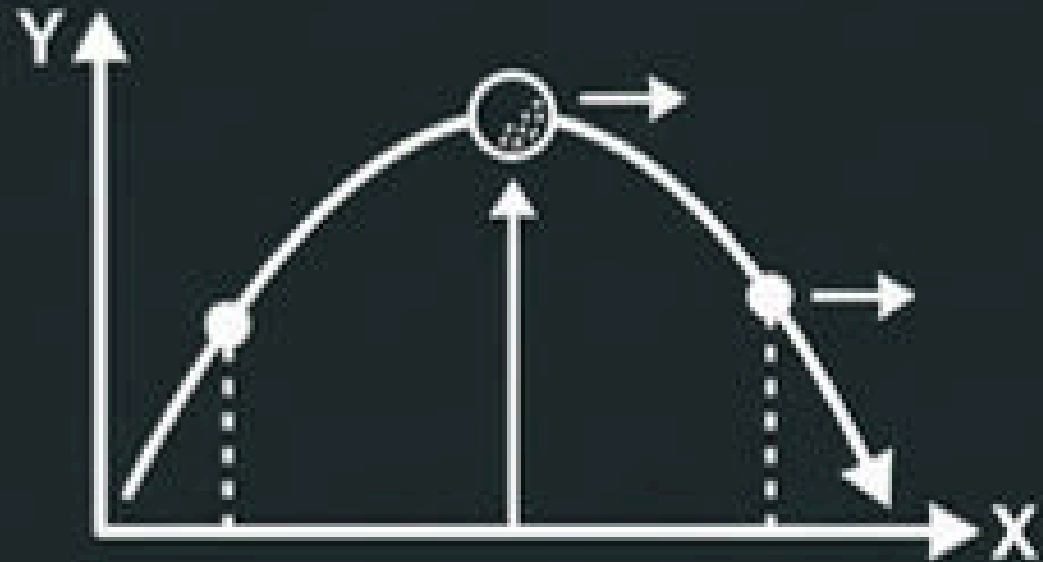
Inclusivity: Opens up opportunities for neuro diverse and tech minded students to be involved in sporting events.



Trackman

Launch Monitors & Simulation

The Elite Pedigree



Who Uses It The undisputed gold standard for professional golfers and touring pros worldwide.

The Tech The iconic Trackman 4 and Trackman iO, featuring industry leading radar and camera technology.

The Pro Edge Tour proven launch monitors providing pinpoint accurate ball flight data and club kinematics.

The Classroom Application

Bespoke Indoor Hubs: Transform unused school spaces into the ultimate virtual environment - training simulator, collaborative space, cinema, wellbeing area.

Clinical Biomechanics: Students analyse launch angles, spin rates, and swing mechanics in real time, bridging STEM gaps.

Gamified Engagement: Utilise virtual golf for highly engaging interschool challenges and school tournaments.



SkiMachine

Skiing & Snowboarding Simulation

The Elite Pedigree

Who Uses It The undisputed gold standard for professional alpine athletes, national ski teams, and Olympic competitors worldwide.

The Tech The advanced SkiMachine simulator, featuring industry leading revolving slope and dynamic motion tracking technology.

The Pro Edge World Cup proven training systems providing pinpoint accurate edge control data, real time balance analysis, and carving kinematics.

The Classroom Application

Bespoke Indoor Hubs: Transform unused school spaces into the ultimate alpine environment with an elite training simulator.

Clinical Biomechanics: Students analyse edge angles, weight distribution, and carving mechanics in real time, bridging physical movement with the laws of physics.

Gamified Engagement: Utilise interactive virtual slope software for highly engaging interhouse slalom challenges and school winter sports tournaments.



SwingVision AI Racquet Analytics

The Elite Pedigree

Who Uses It Backed by ATP World #1 Andy Roddick. Trusted by over 200,000 players, coaches, and federations globally.

The Tech Intelligent AI camera network that transforms traditional tennis and padel courts into highly responsive digital arenas.

The Pro Edge Captures every stroke precisely without requiring any wearable equipment on the athlete.

The Classroom Application

Instant Match Insights: Students and coaches access detailed data including shot speeds, placement heatmaps, and success rates.

Meaningful Analytics: Turns every casual rally into a digital data point, allowing students to analyse geometry and probability in sport.

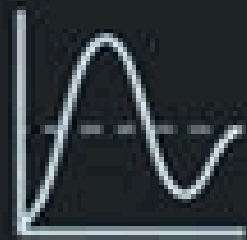


eo, Wahoo & AXIT Elite Diagnostics

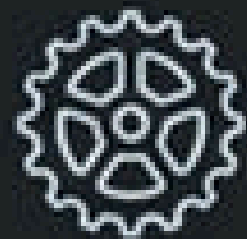
The Elite Pedigree



eo Used by Olympic Champions like Kyle Chalmers to defy limits. Elite-level aquatic analytics via advanced swim bands to improve performance.



Wahoo Industry standard cycling technology used in high performance labs to measure cardiovascular output.



AxIT The latest in S&C hardware and software, streamlining sporting programs and academies athlete profiling, pathways, and rehab.

The Classroom Application

The Mobile Sports Science Lab: Brings clinical grade swimming, cycling, force and power data out of the university lab and directly into the secondary school environment.

Cross Disciplinary STEM: Students map force velocity curves and aquatic drag coefficients, perfectly bridging senior physics, mathematics, and physical education.



SwimBETTER

Unlock your hidden power with the data to swim faster, smarter, better.

The Digital Hub

Esports & Wellbeing

Not all students thrive on the traditional sports field. The High-Performance Esports & Data Lab provides a structured, safe, and elite environment for digital competitors.

Intelligent Gaming Developed with GameAware, we embed top-tier wellbeing education to enhance skill development while mitigating addiction.

- Education Integration Pre built lessons and assessments allow teachers to facilitate esports programs (like Valorant and League of Legends) without prior gaming expertise.

- Holistic Development Uses high-performance coaching models to build discipline, teamwork, and resilience.



The Frictionless Partnership: How We Work



We assess your school's strategic plan, space, and budget to design a bespoke technological ecosystem.

We work with your maintenance and IT teams for delivery and setup of hardware and AV equipment.

We provide ready made lesson plans, detailed units, and assessments to seamlessly integrate the tech with STEM, wellbeing and senior PE objectives.

Comprehensive training for educators, plus year round support to ensure smooth operation.

Build Your World-Class Hub Today

Transform your campus, ease staff workload, and empower the next generation of students with the tools of elite professionals.

Contact us to schedule a no obligation site visit and discover the right package for your school.

Brendan Carrick, Founder
brendan@sporttechhubs.com.au
+61 (0)402 507 601
www.sporttechhubs.com.au

